

TECHNICAL MANUAL

OPERATOR'S, ORGANIZATIONAL, DIRECT SUPPORT
AND GENERAL SUPPORT MAINTENANCE MANUAL
INCLUDING REPAIR PARTS LIST
FOR
STAND, MAINTENANCE ARMATURE
MODEL 1849
(UNITED STANDARD INDUSTRIES, INC.)
(NSN 4940-00-272-8002)

Technical Manual HEADQUARTERS
DEPARTMENT OF THE ARMY
No 9-4940-433-14&P Washington, DC, 15 October 1981

**Operator's, Organizational, Direct Support
and General Support Maintenance Manual
Including Repair Parts List
For
STAND, MAINTENANCE ARMATURE
MODEL 1849
(NSN 4940-00-272-8002)**

REPORTING ERRORS AND RECOMMENDING IMPROVEMENTS
You can help improve this manual. If you find any mistakes or if you know of a way to improve the procedures, please let us know. Mail your letter, DA Form 2028 (Recommended Changes to Publications and Blank Forms), or DA Form 2028-2, located in the back of this manual direct to: Commander, US Army Armament Materiel Readiness Command, ATTN: DRSAR-MAS, Rock Island, IL 61299. A reply will be furnished direct to you.

NOTE

This manual is published for the purpose of Identifying an authorized commercial manual for the use of the personnel to whom this equipment is Issued

Manufactured by United Standard Industries, Inc
2062 Lehigh Ave
Glenview, IL 60025

Procured under Contract No DAAA09-76-M-6259

This technical manual is an authentication of the manufacturer's commercial literature and does not conform with the format and content specified in AR 310-3, Military Publications. This technical manual does, however, contain available information that is essential to the operation and maintenance of the equipment.

Page

Stand, maintenance armature Dwg. 1849..... 1

Parts list..... 3

Description - General 4

Operation..... 4

Trouble shooting and repair 5

INSTRUCTIONS FOR REQUISITIONING PARTS

NOT IDENTIFIED BY NSN

When requisitioning parts not identified by National Stock Number, it is mandatory that the following information be furnished the supply officer.

- 1 - Manufacturer's Federal Supply Code Number. 28210
- 2 - Manufacturer's Part Number exactly as listed herein.
- 3 Nomenclature exactly as listed herein, including dimensions, if necessary.
- 4 - Manufacturer's Model Number. Model No. 1849
- 5 - Manufacturer's Serial Number (End Item).
- 6 Any other information such as Type, Frame Number, and Electrical Characteristics, if applicable.
- 7 If DD Form 1348 is used, fill in all blocks except 4, 5, 6, and Remarks field in accordance with AR 725-50.

Complete Form as Follows:-

(a) In blocks 4, 5, 6, list manufacturer's Federal Supply Code Number -, 28210 followed by a colon and manufacturer's Part Number for the repair part.

(b) Complete Remarks field as follows:

Noun:	(nomenclature of repair part)
For:	NSN: 4940-00-272-8002
Manufacturer:	United Standard Industries, Inc. 2062 Lehigh Ave. Glenview, IL 60025
Model:	1849
Serial:	(of end item)

Any other pertinent information such as Frame Number, Type, Dimensions, etc.

Figure 1

(See foldout in back of manual)

1 (2 blank)

**Parts List - Adjustable Armature Stand
Part No. 1849**

Item	Qty	Description	Part No
1	1	Base	1849-01-04
2	2	Support Rod	-0203
3	4	Soc. Head Cap Screw	-03-00
4	1	Support L H	-04-02
5	1	Hand Knob Assy	-05-03
*6	3	Soc. Head Cap Screw	-06-00
7	1	Plug	-07-M
8	1	Center	-08-03
*9	3	Cap	-09-00
10	1	Support R H	-1002
11	1	Pivot	-1-03
12	2	Stator Holder	-12-04
13	2	Dowel	-13-00

*Parts are preassembled together at factory and are hence known as Cap Screw Assy

**STAND, MAINTENANCE ARMATURE
(ADJUSTABLE)
PART NO. 1849**

DESCRIPTION - GENERAL

P/N 1849 is an adjustable maintenance stand for holding armatures and stators to perform the following maintenance operations

- Soldering Commutator Leads
- Inserting Insulation Wedges
- Banding Armatures
- Rewinding, removing, and inserting coils

It is capable of accommodating armature shafts up to 18" in length and stators up to 12" in diameter The stand consists of basically four components an adjustable base, suitable for mounting the stand to a workbench, two horizontal support rods, right and left hand armature supports, and two stator holders (See Operations Section for more detailed description of components)

OPERATION

A. Assembly

1. Mount base, Item 1, to desired workbench or table area, using four 3/8" bolts through four holes on base surface to secure (Bench and bolts to be user supplied)
2. Insert pivot, Item 11, into bored hole at top of base Secure pivot to base by inserting cap screw assy, Items 6 and 9 (preassembled), through tapped hole at side of base and tightening until secure
3. Insert two support rods, Item 2, through holes at sides of pivot Secure by inserting two socket head cap screws, Item 3, through tapped holes at top of pivot and tightening until secure
4. Insert right-hand support, Item 10, and left-hand support, Item 4, on support rods through bored holes at lower end of supports Secure to support rods by inserting two socket head cap screws, Item 3, through tapped holes at bottom of right-hand and left-hand support and tightening until secure
5. Insert hand knob assy, Item 5, through tapped hole at side of left-hand support and turn until hand knob is flush against left-hand support surface Plug, Item 7, is soft-welded to rest flat on threaded surface of hand knob assembly Tighten cap screw assembly through tapped hole at top of support until secure against plug and hand knob assembly
6. Insert center, Item 8, through bored hole at side of right-hand support Insert cap screw assembly

through tapped hole at top of right-hand support and tighten until center is secured In position shown (See page 1)

B. To Mount Armature On Stand

Slide right-hand and left-hand supports along support rods (by loosening cap screws at bottom of supports) to accommodate approximate length of armature to be repaired Mount armature on cone-point ends of center and hand knob assembly

When armature is secured against these points, tighten cap screws at bottom of supports to lock armature in position Loosen cap screw assembly at top of left-hand support and turn hand knob assembly at side of left-hand support until armature is secured against both cone point ends Lock hand knob assembly In place by turning cap screw assembly until secure

Once armature is mounted in this position, the stand can adjust to accommodate a variety of working operations and positions

1. To rotate armature on a horizontal axis, loosen cap screw assembly at side of base This will allow the pivot to turn 360degrees Tighten cap screw assembly to lock in desired position
2. To slide armature laterally, loosen cap screws at top of pivot This will allow the support rods to slide laterally on the base Tighten cap screws to lock in desired position
3. To rotate armature on vertical axis, loosen cap screw assembly at top left-hand support and hand knob assy Rotate armature to desired position and lock in place

C. To Mount Stator On Stand

Mount two stator holders, Item 12, to right-hand and left-hand supports by positioning stator holders on cone-point ends of hand knob assembly and center and securing stator holders to left-hand and right-hand supports by inserting two dowels, Item 13, through bored

holes at sides of supports and into bored hole in stator holders

Mount stator to stand in the same manner as armature, securing ends of stator against appropriate radial face of stator holder according to size of stator

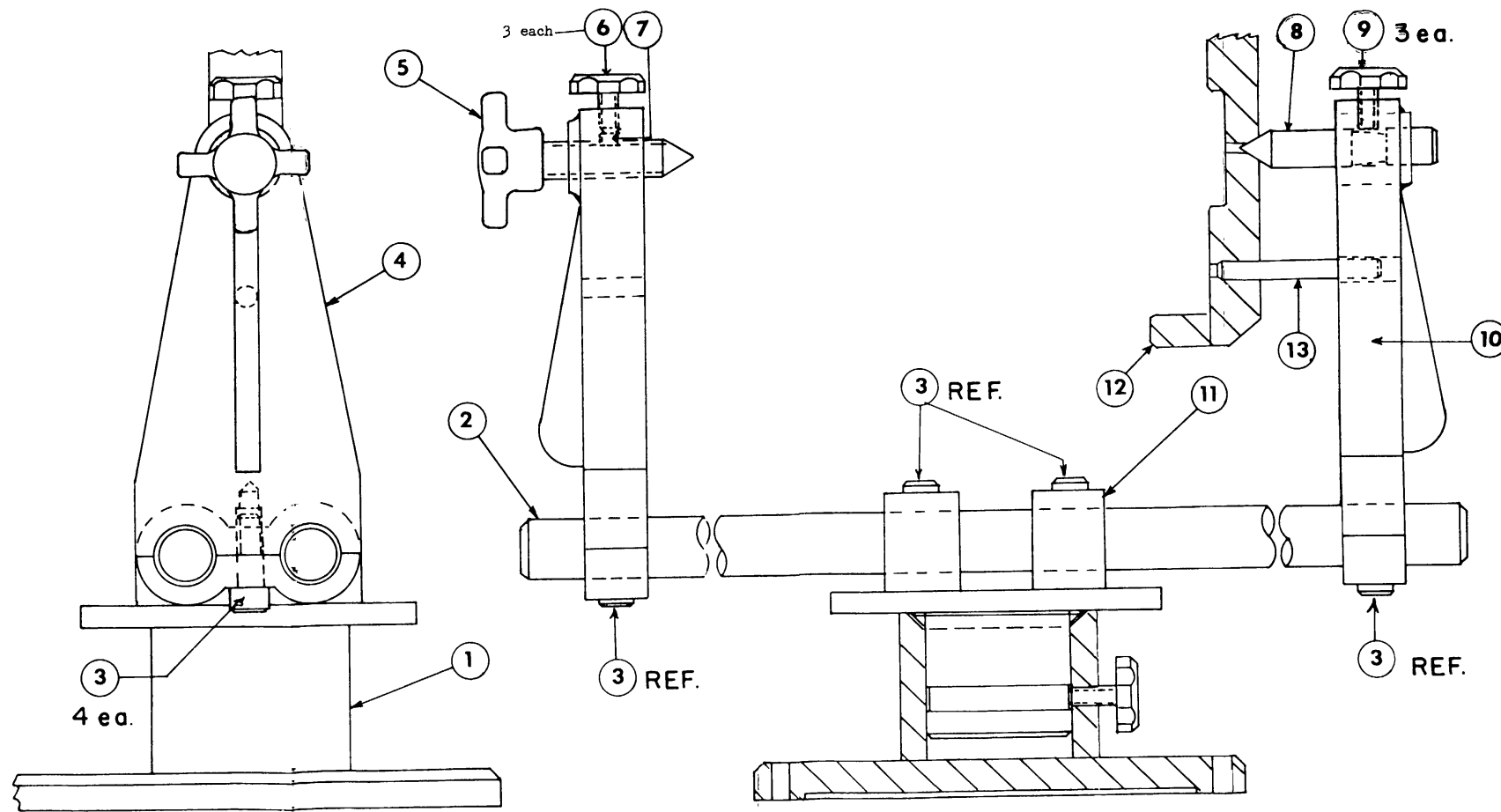
Once stator is mounted in this position, the stand can adjust to accommodate working operations and positions in the same manner as that of the mounted armature

TROUBLE SHOOTING AND REPAIR

P/N 1849 is constructed with the finest available materials and processing methods to provide maximum performance and durability. The support rods are chrome plated for maximum wearability.

With normal care and upkeep and by following the instructions set forth in this manual, the possibilities of malfunction and/or repair are eliminated.

5/(6 blank)



NOTE: PARTS LIST ON
FOLLOWING PAGE

STAND, MAINTENANCE ARMATURE DWG. 1849

Figure 1.

1 (2 blank)

Figure 1.

1 (2 blank)

By Order of the Secretary of the Army

E. C. MEYER
General, United States Army
Chief of Staff

Official:

ROBERT M. JOYCE
Brigadier General, United States Army
The Adjutant General

*U.S. GOVERNMENT PRINTING OFFICE : 1991 - 281-486 (42034)

RECOMMENDED CHANGES TO EQUIPMENT TECHNICAL PUBLICATIONS



THEN... JOT DOWN THE DOPE ABOUT IT ON THIS FORM, CAREFULLY TEAR IT OUT, FOLD IT AND DROP IT IN THE MAIL!

SOMETHING WRONG WITH THIS PUBLICATION?

FROM: (PRINT YOUR UNIT'S COMPLETE ADDRESS)

DATE SENT

PUBLICATION NUMBER

PUBLICATION DATE

PUBLICATION TITLE

BE EXACT... PIN-POINT WHERE IT IS

IN THIS SPACE TELL WHAT IS WRONG AND WHAT SHOULD BE DONE ABOUT IT:

PAGE NO.	PARA-GRAPH	FIGURE NO.	TABLE NO.
----------	------------	------------	-----------

TEAR ALONG PERFORATED LINE

PRINTED NAME, GRADE OR TITLE, AND TELEPHONE NUMBER

SIGN HERE:

DA FORM 2028-2 JUL 79

PREVIOUS EDITIONS ARE OBSOLETE.

P.S.—IF YOUR OUTFIT WANTS TO KNOW ABOUT YOUR RECOMMENDATION MAKE A CARBON COPY OF THIS AND GIVE IT TO YOUR HEADQUARTERS.

